

# TIRE PRESSURE MANAGEMENT

## Inflation Pressure Recommendation

### ! SAFETY

Important instructions for safe inflation

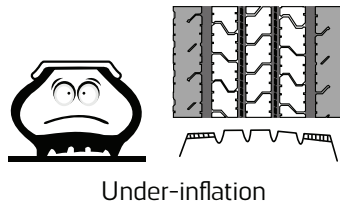
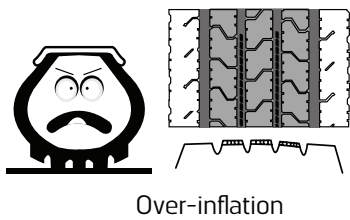


**Over-inflation reduces**

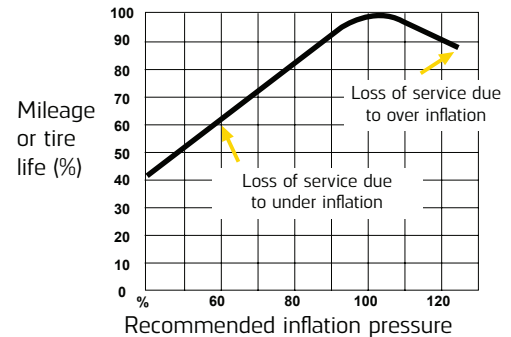
- Comfort
- Grip
- Braking distance
- Tire life span, particularly on Drive axle tires
- Safety

**Under-inflation leads to**

- Reduced vehicle handling and safety
- A reduction in casing retreadability
- An increase of rolling resistance consequently of fuel consumption



Effect of inflation pressure on tire life



### ADVICE BEFORE INFLATION

- 1 Weigh your vehicle and its load, axle by axle, to determine tire pressure.
- 2 Measure the pressure when cold (when the vehicle has been stationary for several hours): pressures must be checked at regular intervals and during each service.
- 3 Important safety instruction: pressure increases when the vehicle is in motion, never reduce the pressure of a hot tire.
- 4 Pressure gauges: must be accurate, handled with care and calibrated regularly

**! Caution-** Driving with insufficient pressure can damage your tires. After having Driven with an underinflated tire, do not re-inflate tires: have your tires fully checked by an expert.

### INFLATION METHOD



#### With inflation cage

- Place the tire vertically in the inflation cage
- Read the cage user manual



#### Without inflation cage

##### Step1

Pre-inflate tire up to 1.5 bars, and STOP

Check the tire. If in doubt, stop and call an expert.

##### Step2

Inflate up to the appropriate pressure.

3m During inflation, stand in line with the tire tread three meters away