



# GSL229 FS

SmartWay  
Verified



For Trucks, Steer Position

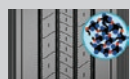


Long Haul

## SmartWay Verified Long Haul Steer Tire

### Features

### Benefits



Fuel saving compound

Lower rolling resistance and higher fuel economy



Extra wide and deep tread

Outstanding tread life



Defense ribs

Effectively prevents initiation of irregular wear



Optimized footprint distribution

Improves footprint performance to prevent irregular wear

Tire Size	Item Code	PR	LR	LI/SR	Approved Wheel	Allowed Wheel	Max Load Single	Max Load Dual	Section Width	Static Loaded Radius	Overall Diameter	Tread Depth	RPM	Weight	
					Inch	Inch	(Lbs. @ PSI)	(Lbs. @ PSI)	Inch	Inch	Inch	32nds		Lbs.	
11R22.5	COMING SOON	14	G	—	—	—	—	—	—	—	—	—	—	—	
11R24.5	COMING SOON	14	G	—	—	—	—	—	—	—	—	—	—	—	
285/75R24.5	COMING SOON	14	G	—	—	—	—	—	—	—	—	—	—	—	
295/75R22.5	100EV1673Q	14	G	144/141 L	9.00	8.25	6,175@110	5,675@110	11.7	18.6	39.9	19	521	121	
295/75R22.5	COMING SOON	16	H	—	—	—	—	—	—	—	—	—	—	—	
GT RADIAL GSL213 FS: SEE PAGE 39 FOR MORE INFORMATION															
11R22.5	100EV809G	14	G	144/142 M	8.25	7.50	6,175@105	5,840@105	11.0	19.3	41.5	19	501	128	
11R24.5	100EV403G	14	G	146/143 M	8.25	7.50	6,610@105	6,005@105	11.0	20.3	43.5	19	479	138	
285/75R24.5	100EV766G	14	G	144/141 M	8.25	—	6,175@110	5,675@110	11.1	19.4	41.3	19	503	127	

PR Ply Rating    LR Load Range    LI Load Index    SR Speed Rating    RPM Revolutions Per Mile

Giti manufactures SmartWay Verified Technologies. Learn more at [epa.gov/smartway](http://epa.gov/smartway).

Product details given for information only. Giti reserves the right to modify details of products and services at any time and without notice.



COMMERCIAL TRUCK TIRES